

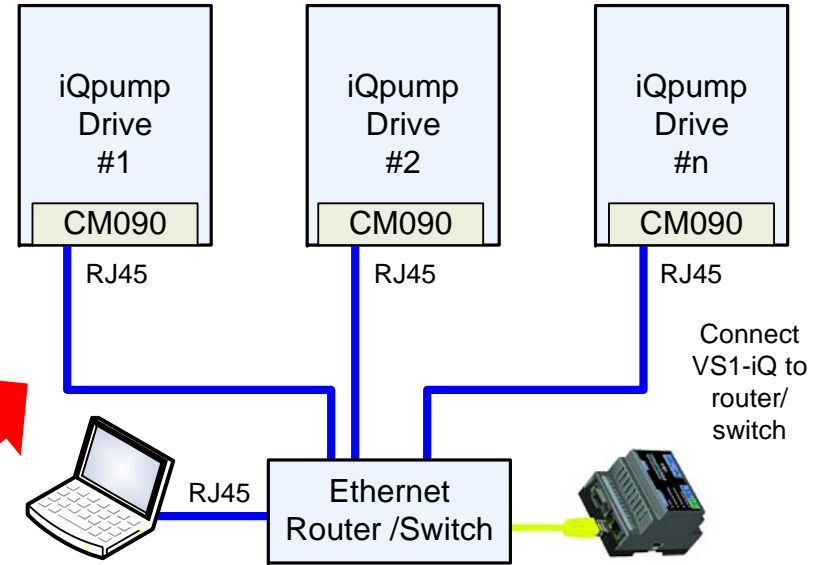
VirtualSCADA® VS1 iQpump® Quick Setup Guide (CM090)

VS1 Web-based SCADA – RS232 - RS485 - Modbus/TCP Communication Gateway

STEP 2

VirtualSCADA® VS1 Network Overview

Connect iQpump drive(s) to network using Ethernet router or switch. Make sure each iQpump drive has been setup with a unique IP address (refer to the CM090 user manual).



Note: It is recommended to use a static IP for the VS1-iQ and iQpump Drives. To access the VS1-iQ and iQpump system via the Internet requires the user to have an internet connection to be available at site with a static IP to the VS1-iQ.



VS1-iQ Module

STEP 1

Connect Network Cable to Ethernet Port.

STEP 3

Connect Power Supply (9 - 28VAC/DC)



STEP 4

Connect Network Cable to Ethernet Port and power-up module.

Check Link LED:

- 10Mbps (green)
- 100Mbps (orange)

Check network cable if LED does not light up!



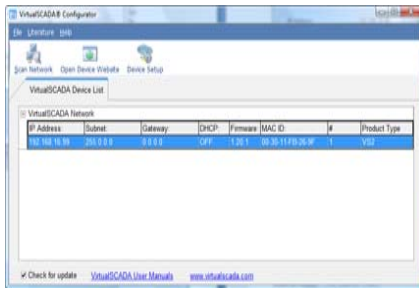
Step 5 to 7 VirtualSCADA® VS1 iQpump® Quick Setup Guide (CM090)

VS1 Web-based SCADA – RS232 - RS485 - Modbus/TCP Communication Gateway

Note: Make sure each iQpump Drive with the CM090 Ethernet option has a unique IP address. Example: iQpump #1: 192.168.16.90, iQpump #2: 192.168.16.91...iQpump #n: 192.168.16.n, VS1 IP: 192.168.16.50.

STEP 5

Run VirtualSCADA® Configurator Software



Install Program from CD or visit our website.

Default username and password for actual website is admin/admin

Setup

1. Double click on device entry to edit.
2. If you enable DHCP make sure a DHCP server is available on the network.
3. Default password to make changes is "admin".

Trouble Shooting

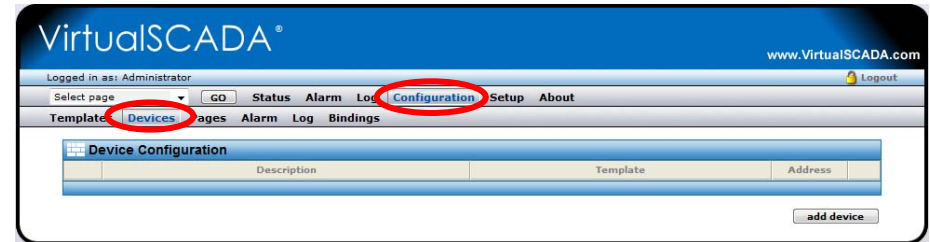
Make sure the IP address used is not used by any other device on the network.

If required make sure to set the correct Gateway and DNS settings.

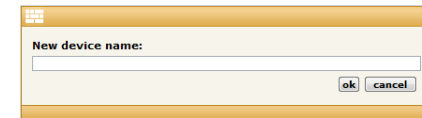
STEP 7

Add Device

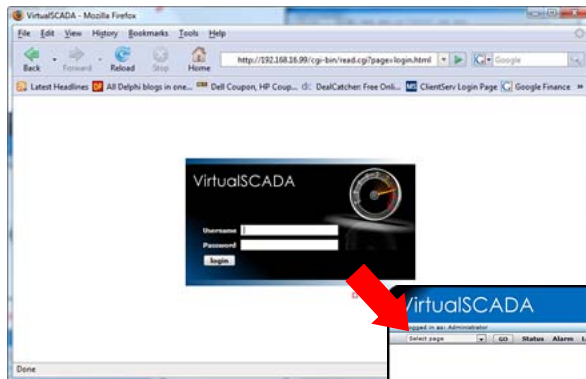
First click on **Configuration** then click on **Devices**



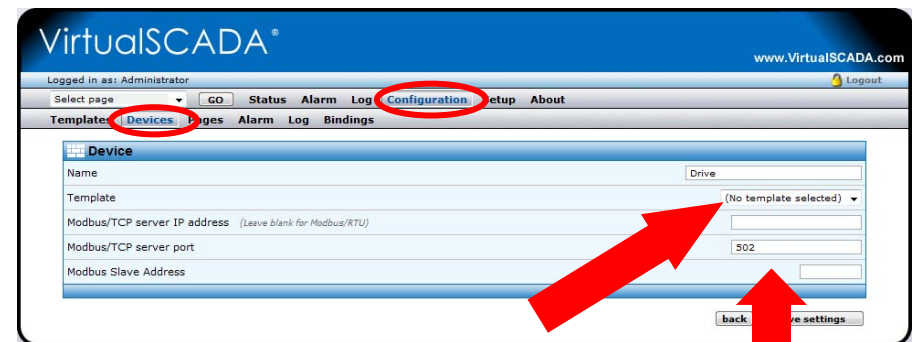
Click **Add Device** button to enter device name (E.g. iQpump #1)



Highlight device entry in Step 5 and click open Device Website button to login into VirtualSCADA VS1-iQ



STEP 6



Next select correct iQpump Ethernet template from list. Set CM090/92 IP Address to **"Modbus/TCP server IP address"** and set **"Modbus Slave Address"** to H5-01 of the iQpump

Click **save settings** button when done.

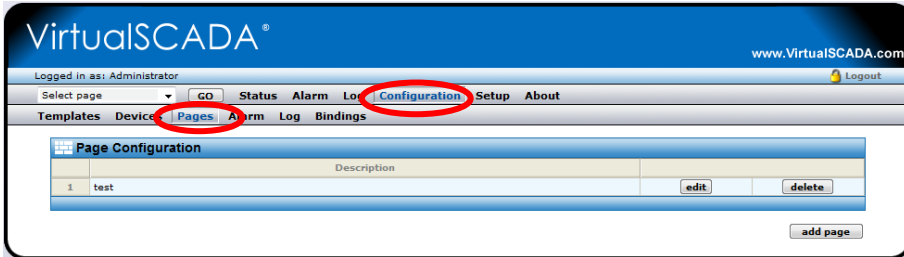
Step 8 to 10 VirtualSCADA® VS1 iQpump® Quick Setup Guide (CM090)

VS1 Web-based SCADA – RS232 - RS485 - Modbus/TCP Communication Gateway

Note: Make sure each iQpump Drive with the CM090 Ethernet option has a unique IP address. Example: iQpump #1: 192.168.16.90, iQpump #2: 192.168.16.91...iQpump #n: 192.168.16.n, VS1-iQ IP: 192.168.16.50.

STEP 8 Create Custom Monitor Page

First click on **Configuration** then click on **Pages**

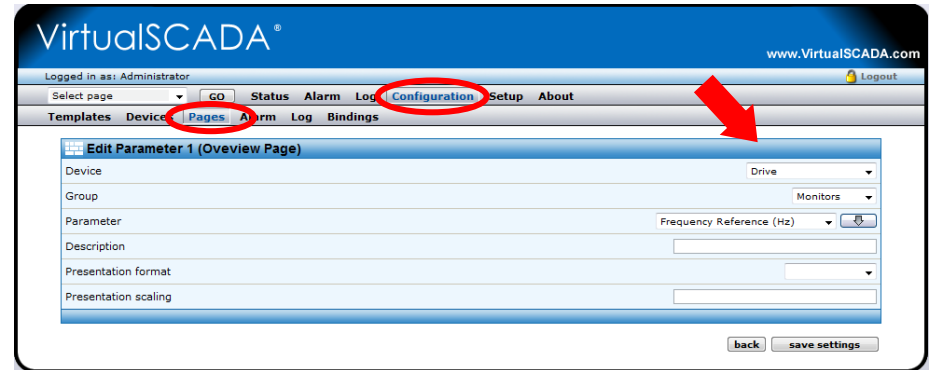


Click **Add Page** button to enter page name (E.g. Overview Page)

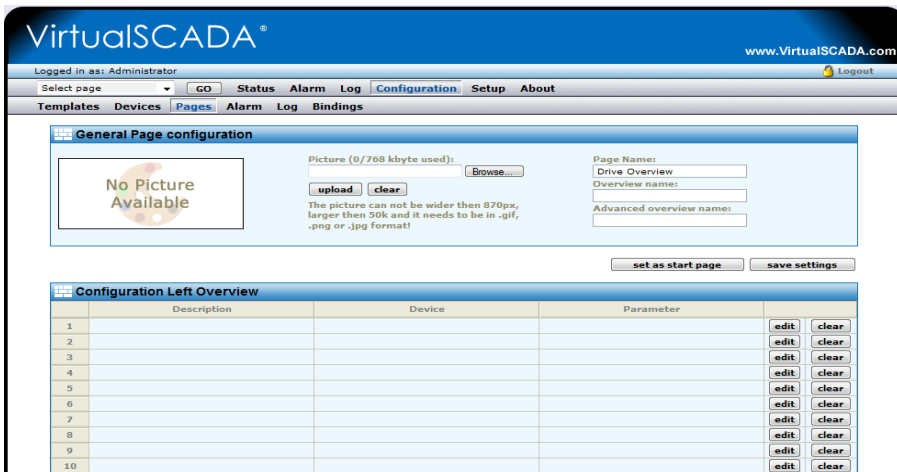
New page name:

Step 9 Continued....

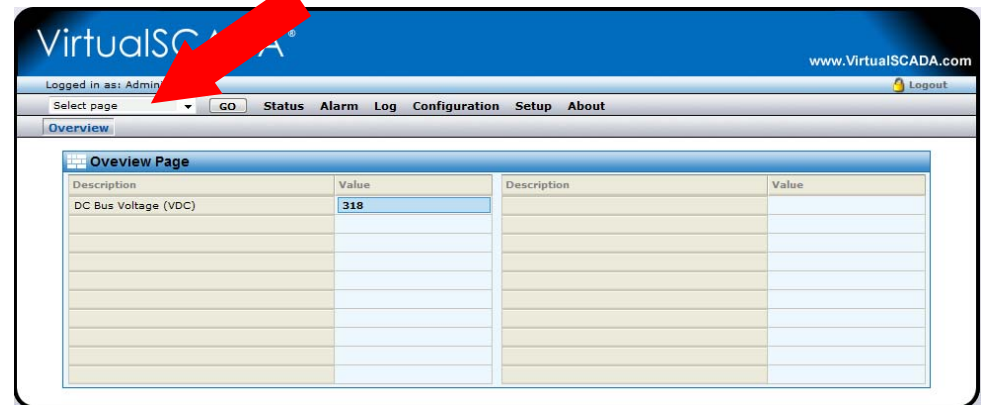
Select Device and Parameter then click **save settings** button



STEP 9 Click **Edit** button to add monitor to the page



STEP 10 Select Page (e.g. Overview Page) from list



Refer to the VirtualSCADA VS1 User Manual for additional features and functions of the VS1-iQ Module.

All trademarks and registered trademarks are the property of their respective owners.