

VirtualSCADA® VS1 iQpump® Quick Setup Guide (RS485)

VS1 Web-based SCADA – RS232 - RS485 - Modbus/TCP Communication Gateway

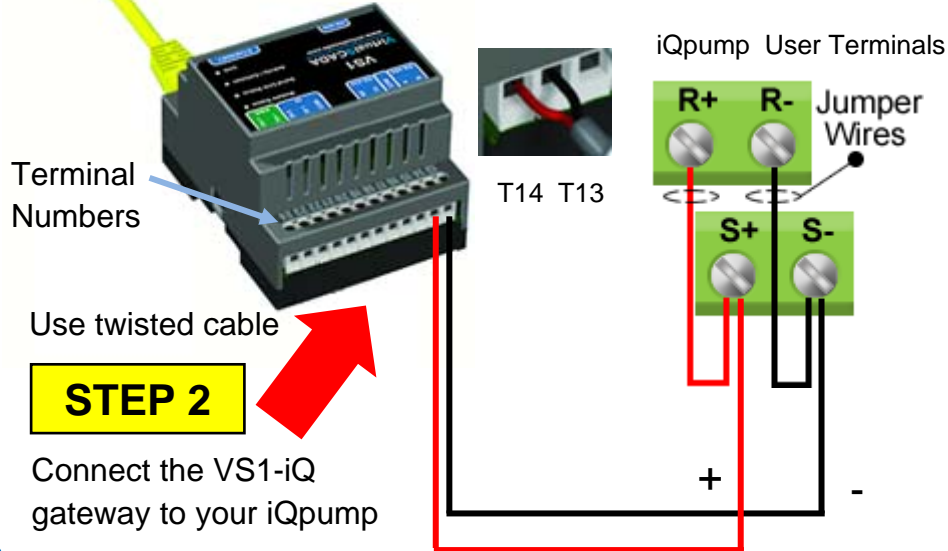


VS1-iQ Module

STEP 1

Connect Network Cable to Ethernet Port.

Connect Terminal 13 and 14 of the VirtualSCADA VS1-iQ Module to the RS485/422 terminals of your iQpump drive(s).

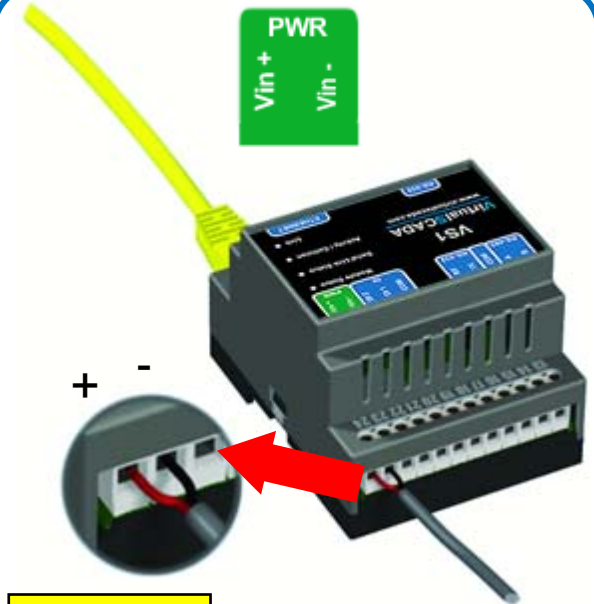


Terminal Numbers

Use twisted cable

STEP 2

Connect the VS1-iQ gateway to your iQpump



STEP 3

Connect Power Supply (9 - 28VAC/DC)

STEP 4

Connect Network Cable to Ethernet Port and power-up module.

Check Link LED:

- 10Mbps (green)
- 100Mbps (orange)

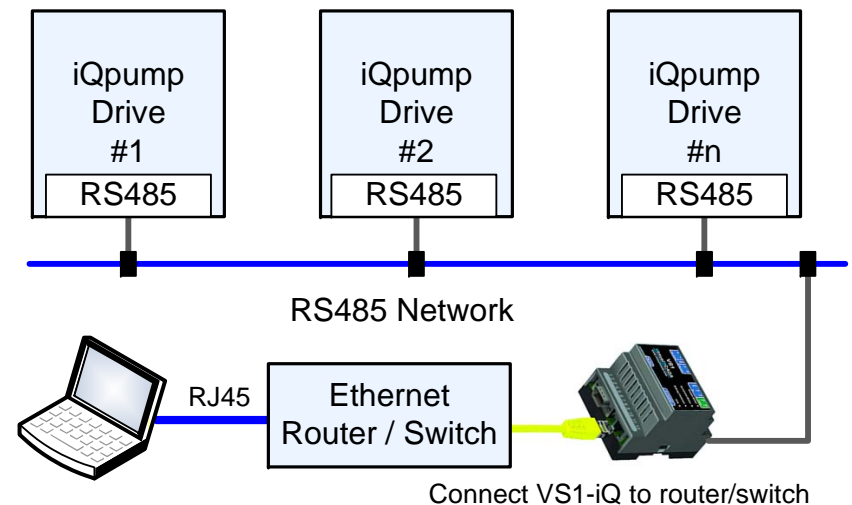
Check network cable if LED does not light up!



To access the VS1-iQ and iQpump system via the Internet requires the user to have an internet connection to be available at site with a static IP to the VS1-iQ.

VirtualSCADA® VS1-iQ RS485 Network Overview

Note: The VS1 RS485 connection cannot be used when using the iQpump system in multiplex mode. Use an CM090 Ethernet option card for each iQpump drive connected when using iQpump in multiplex mode.



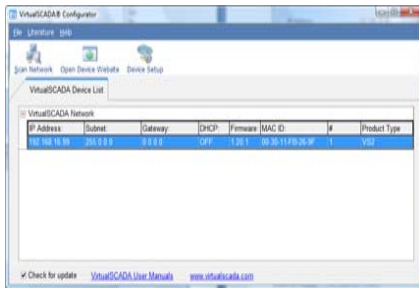
Connect VS1-iQ to router/switch

VS1 Web-based SCADA – RS232 - RS485 - Modbus/TCP Communication Gateway

Note: The VirtualSCADA VS1 Module is default set up for a baud rate of 9600; make sure the devices connected to the VS1-iQ match this baud rate. Please refer to the user manual of the devices connected to the VS1-iQ.

STEP 5

Run VirtualSCADA® Configurator Software



Install Program from CD or visit our website.

Default username and password for actual website is admin/admin

Setup

1. Double click on device entry to edit.
2. If you enable DHCP make sure a DHCP server is available on the network.
3. Default password to make changes is "admin".

Trouble Shooting

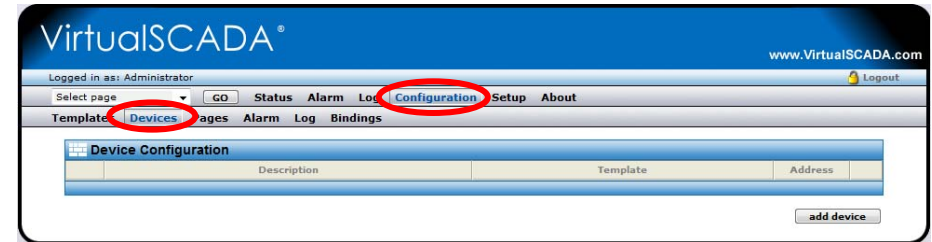
Make sure the IP address used is not used by any other device on the network.

If required make sure to set the correct Gateway and DNS settings.

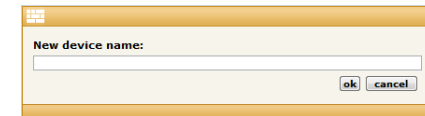
STEP 7

Add Device

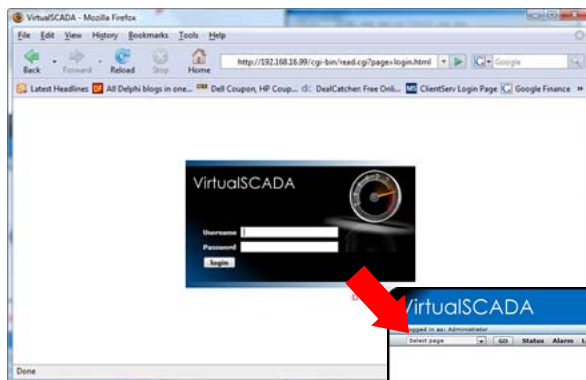
First click on **Configuration** then click on **Devices**



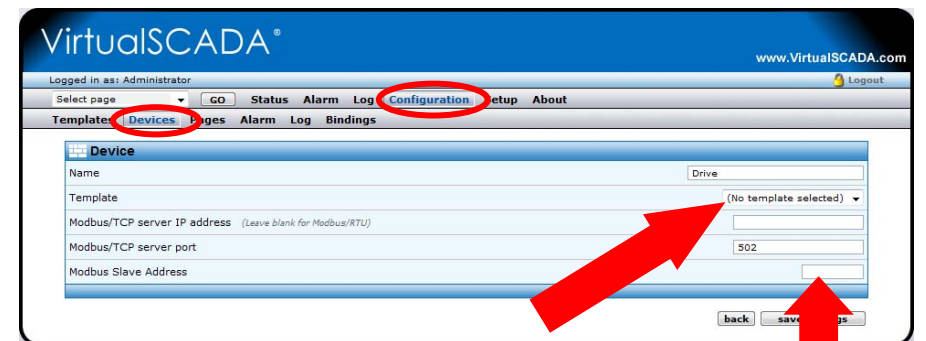
Click **Add Device** button to enter device name (e.g. iQpump 1)



Highlight device entry in Step 5 and click open Device Website button to login into VirtualSCADA VS1-iQ



STEP 6



Next select correct iQpump template from list and set **"Modbus Slave Address"** to parameter H5-01 of the iQpump drive (default 31 / 1F).

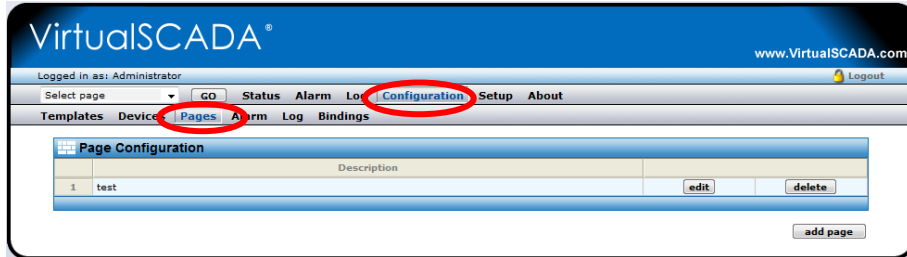
Click **save settings** button when done.

VS1 Web-based SCADA – RS232 - RS485 - Modbus/TCP Communication Gateway

Note: The VirtualSCADA VS1 Module is default set up for a baud rate of 9600; make sure the devices connected to the VS1-iQ match this baud rate. Please refer to the user manual of the devices connected to the VS1-iQ.

STEP 8 Create Custom Monitor Page

First click on **Configuration** then click on **Pages**



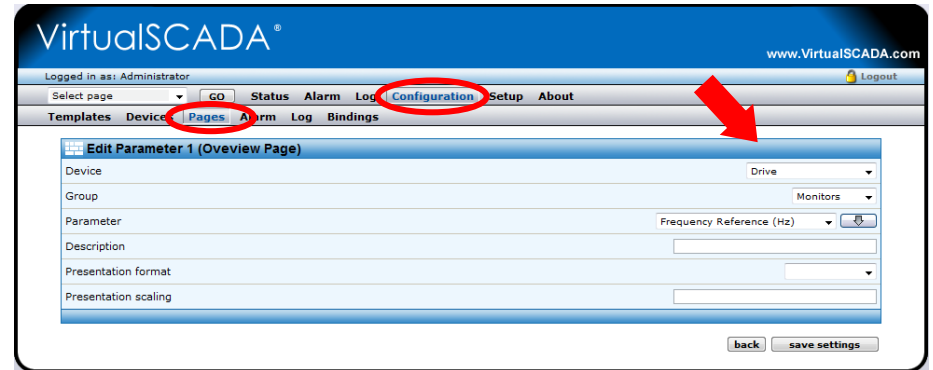
Click **Add Page** button to enter page name
(E.g. Overview Page)

New page name:

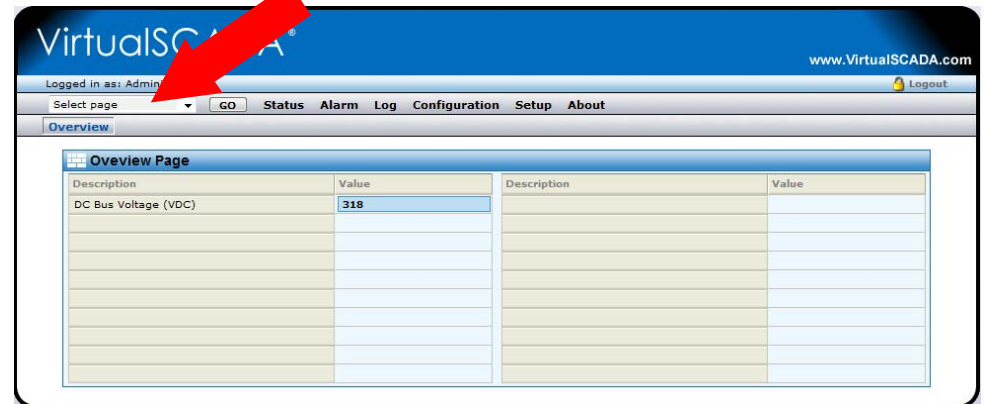
ok cancel

Step 9 Continued....

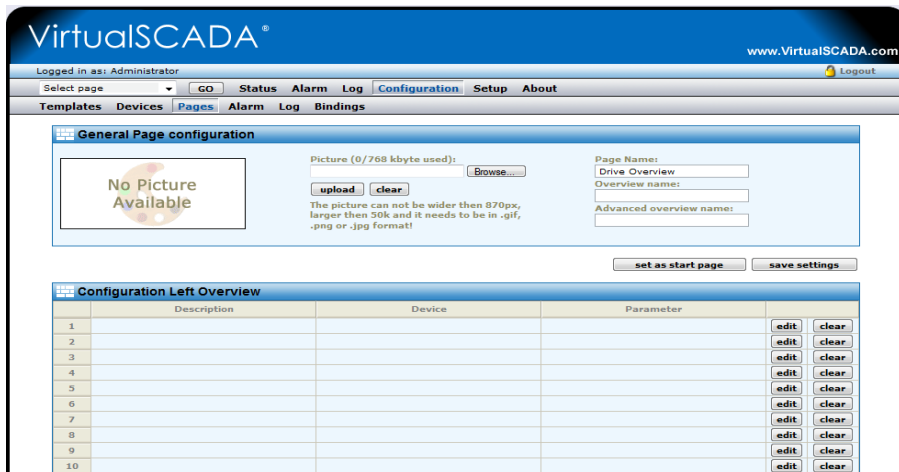
Select Device and Parameter then click **save settings** button



STEP 10 Select Page (e.g. Overview Page) from list



STEP 9 Click **Edit** button to add monitor to the page



Refer to the VirtualSCADA VS1 User Manual for additional features and functions of the VS1-iQ Module.

All trademarks and registered trademarks are the property of their respective owners.