

VIRTUALSCADA® VS1 for

HVAC Applications

VirtualSCADA VS1 for the Heating, Ventilation and Airconditioning application gives supervisors and operators web-based access to their building automation system by using a standard internet web-browser. Standard built-in features include data-logging, alarm handling, monitoring and control. VirtualSCADA VS1 can be configured in just a matter of minutes and is compatible with any device that supports Modbus RTU over RS232/RS485 or Modbus/TCP over Ethernet.

Features and Functions

Monitoring

- Customizable Monitor Pages with up to 20 Signals per Page
- Select from Predefined System Signals
- Create Custom Signals with Custom Scaling, Description and Units

Trending & Data Logging

- Log up to 64 Signals with Date and Time Stamp
- Configurable Sample Rate with Data Logging up to 3 Years
- Export or E-Mail Trend Data
- Offload Data to FTP Server

System Control

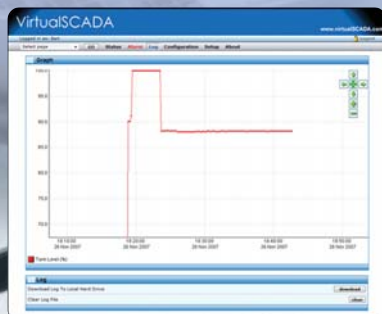
- View/Modify Parameters

Alarm Monitoring

- Define up to 64 Alarms
- Alarm History Overview with Date and Time Stamp
- Alarm Notification via SMS* or E-mail

System Functions

- User Account Management
- Real-time Clock
- Connect to FTP Server
- Connect to External GSM/GPRS Modem*



Actual Web-browser Screenshot

For more information visit us online at www.VirtualSCADA.com

* Requires GSM/GPRS Modem and Wireless Service Agreement

All trademarks are the property of their respective owners.

VIRTUALSCADA[®] VS1 Technical Specifications

Monitor and Control Solutions for HVAC and Industrial Applications

Serial Ports: 1 x RS232 (with built-in full modem support)
1 x RS232/RS485, up to 115.2 kbit/s

Serial Protocols: Modbus RTU and Modbus ASCII, JBUS

Ethernet: 10/100 Mbit/sec

Ethernet Protocols: Modbus TCP, HTTP, SMTP, FTP, SNMP

I/O: 2 x Discrete Inputs (Opto-Isolated)

LED Indicators: Module Status, Serial Activity, Ethernet Link,
Ethernet Activity / Collision

Configuration: Via Web-browser

Housing: Plastic, DIN Rail Mount

Dimensions: 3.54" x 2.75" x 2.28" (H x W x D)

Operating Temperature: -40 to 80 deg Celsius

Power Supply: 9 to 28V AC or DC

Power Consumption: 2W

Part Number: VS1



For more information visit us online at www.VirtualSCADA.com