

VIRTUALSCADA® for Mining Applications

VirtualSCADA for the Mining Industry gives supervisors and operators web-based access to their underground or above ground system by using a standard internet web-browser. Standard built-in features include data-logging, alarm handling, monitoring and control. Virtual SCADA can be configured in just a matter of minutes and is compatible with any device that supports MODBUS RTU over RS232/RS485 or MODBUS/TCP over Ethernet.

Features and Functions

Monitoring

- Customizable Monitor Pages with up to 20 Signals per Page
- Select from Predefined System Signals
- Create Custom Signals with Custom Scaling, Description and Units

Alarm Monitoring

- Define up to 64 Alarms
- Alarm History Overview with Date and Time Stamp
- Alarm Notification via SMS* or E-mail

Trending & Data Logging

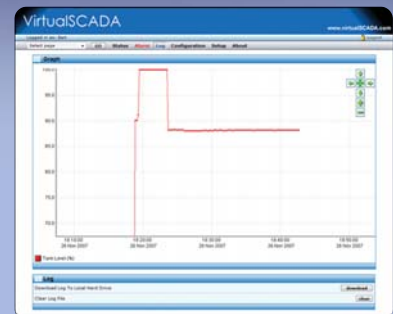
- Log up to 64 Signals with Date and Time Stamp
- Configurable Sample Rate with Data Logging up to 3 Years
- Export or E-Mail Trend Data
- Offload Data to FTP Server

System Functions

- User Account Management
- Real-time Clock
- Connect to FTP Server
- Connect to External GSM/GPRS Modem*

System Control

- View/Modify Parameters



Actual Web-browser Screenshot



For more information visit us online at www.VirtualSCADA.com

* Requires GSM/GPRS Modem and Wireless Service Agreement

All trademarks are the property of their respective owners.

VIRTUALSCADA[®] Technical Specifications

Serial Ports:	1 x RS232 (with built-in full modem support) 1 x RS232/RS485, up to 115.2 kbit/s
Serial Protocols:	Modbus RTU and Modbus ASCII, JBUS
Ethernet:	10/100 Mbit/sec
Ethernet Protocols:	Modbus TCP, HTTP, SMTP, FTP, SNMP
I/O:	2 x Discrete Inputs (Opto-Isolated)
LED Indicators:	Module Status, Serial Activity, Ethernet Link, Ethernet Activity / Collision
Configuration:	Via Web-browser
Housing:	Plastic, DIN Rail Mount
Dimensions:	3.54" x 2.75" x 2.28" (H x W x D)
Operating Temperature:	-40 to 80 deg Celsius
Power Supply:	9 to 28V AC or DC
Power Consumption:	2W

