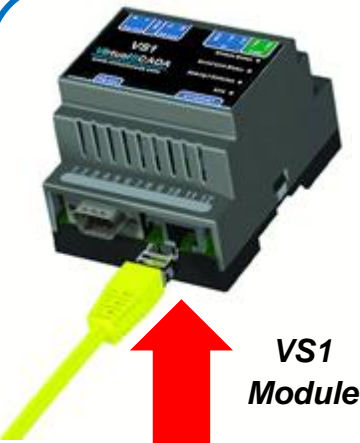


# VirtualSCADA® Quick Setup Guide




**VS1 Module**

**STEP 1**

Connect Network Cable to Ethernet Port.

Connect Terminal 13 and 14 of the VirtualSCADA VS1 Module to the RS485 terminals of the drive.



T14 T13

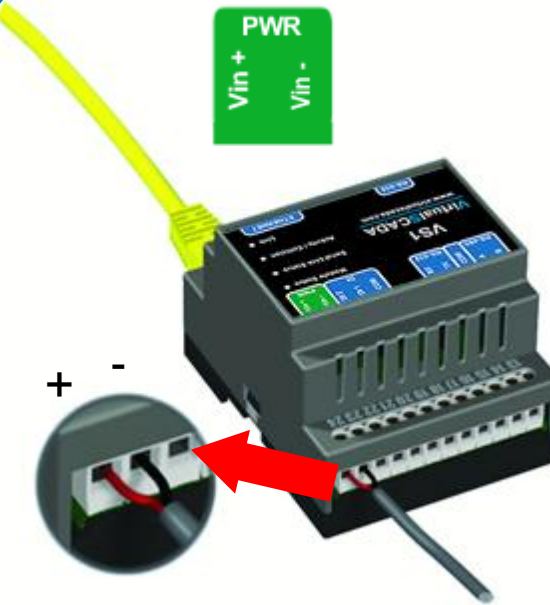
Drive	Connections	Type
P11	DX+ DX-	TERMINALS
G11	DX+ DX-	TERMINALS
ECO	DX+ DX-	TERMINALS
MULTI	DX+ DX-	RJ45 - Keypad
MINI	DX+ DX-	RJ45 - Option

Terminal Numbers

Use twisted cable

**STEP 2**

Connect VirtualSCADA Module to the Drive.



**PWR**  
Vin +  
Vin -

**STEP 3**

Connect Power Supply (9 - 24VAC/DC)


**STEP 4**

Connect Network Cable to Ethernet Port and power-up module.

**Check Link LED:**

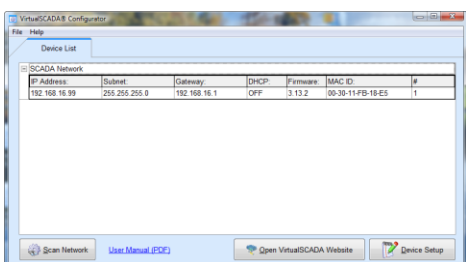
- 10Mbps (green)
- 100Mbps (orange)

Check network cable if LED does not light up!



**STEP 5**

Run VirtualSCADA® Configurator Software



Install Program from CD or visit our website.

**Setup**

1. Double click on device entry to edit.
2. If you enable DHCP make sure a DHCP server is available on the network.
3. Default password to make changes is "admin".

**Trouble Shooting**

Make sure the IP address used is not used by any other device on the network.

If required make sure to set the correct Gateway and DNS settings.

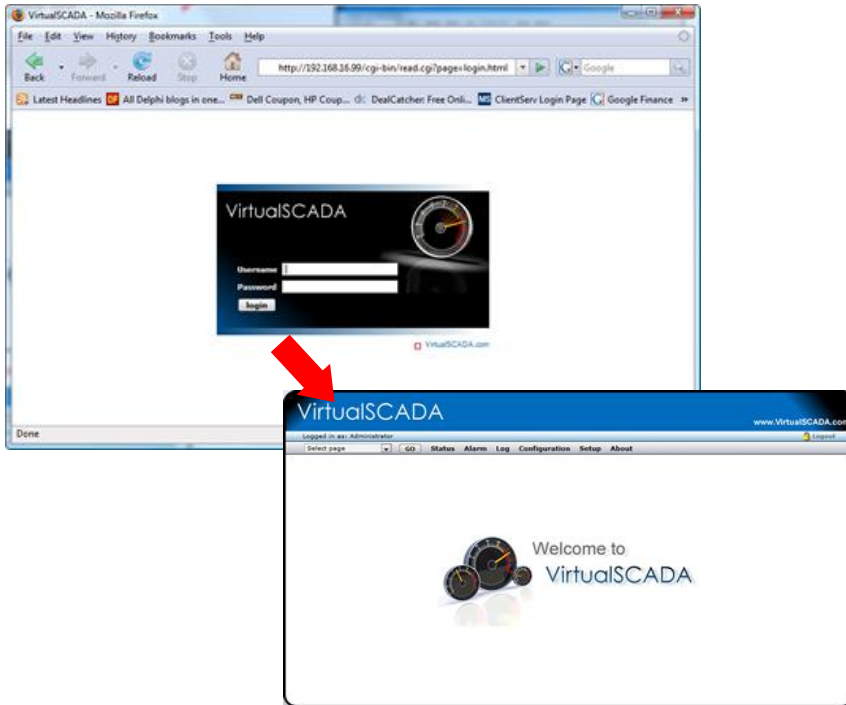
**Default username and password for actual website is admin/admin**

# Step 6 to 7 VirtualSCADA® Quick Setup Guide

**Note:** The VirtualSCADA Module is default set up for a baud rate of 9600; make sure your drive is setup to match this baud rate. Please refer to the drive user manual.

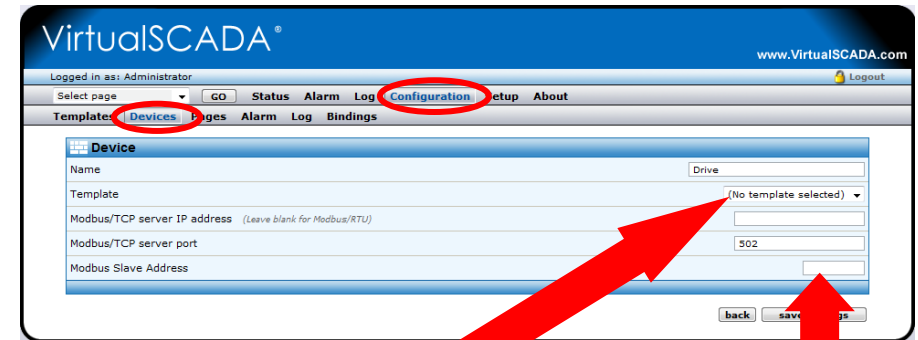
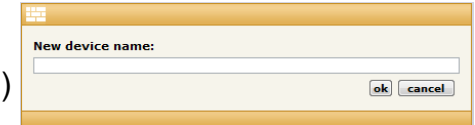
## STEP 6

Login into VirtualSCADA



## Step 7 Continued....

Click **Add Device** button to enter device name (e.g. Drive 1)



Next select correct drive template from list and set address

Click **save settings** button when done.

## STEP 7

Add Drive

First click on **Configuration** then click on **Devices**

