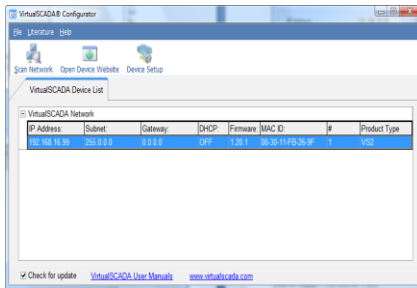


VS1 Web-based SCADA – RS232 - RS485 - Modbus/TCP Communication Gateway

Note: The VirtualSCADA VS1 Module is default set up for a baud rate of 19.2KB make sure the devices connected to the VS1-SK match this baud rate. Please refer to the user manual of the devices connected to the VS1-SK

STEP 5

Run VirtualSCADA® Configurator Software



Install Program from CD or visit our website.

Default username and password for actual website is admin/admin

Setup

1. Double click on device entry to edit.
2. If you enable DHCP make sure a DHCP server is available on the network.
3. Default password to make changes is "admin".

Trouble Shooting

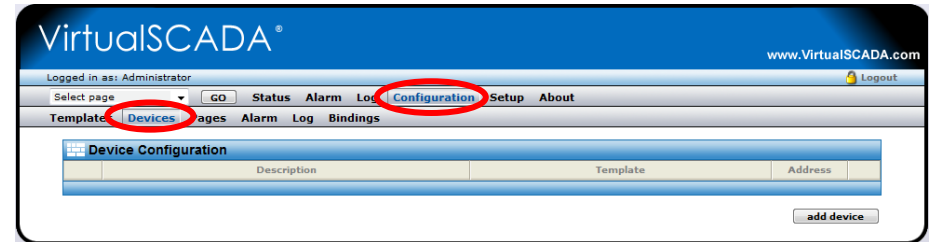
Make sure the IP address used is not used by any other device on the network.

If required make sure to set the correct Gateway and DNS settings.

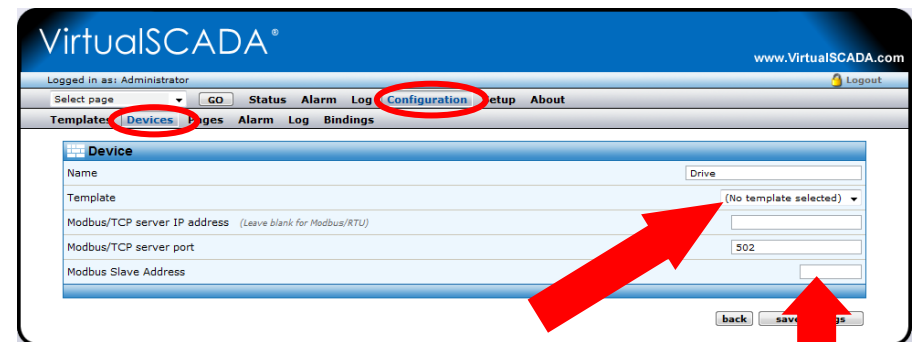
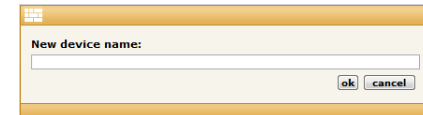
STEP 7

Add Device

First click on **Configuration** then click on **Devices**



Click **Add Device** button to enter device name (e.g. Drive 1)



Next select correct SK template from list and set **"Modbus Serial Comms Address"** to parameter 11.23 of the SK drive (default 1).

Click **save settings** button when done.

STEP 6

Highlight device entry in Step 5 and click open Device Website button to login into VirtualSCADA VS1-SK

